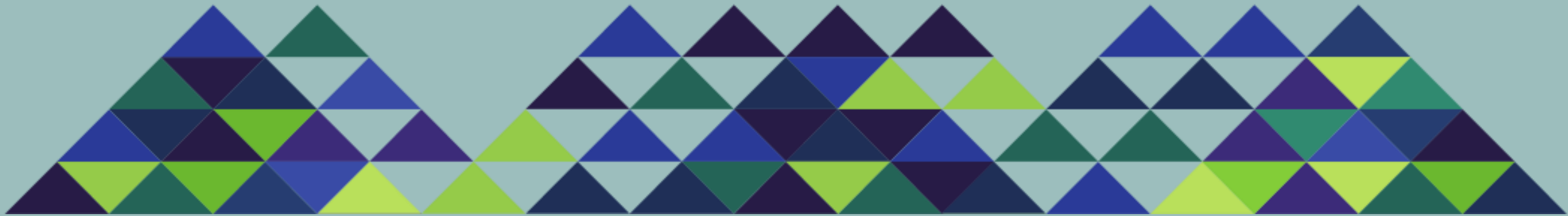


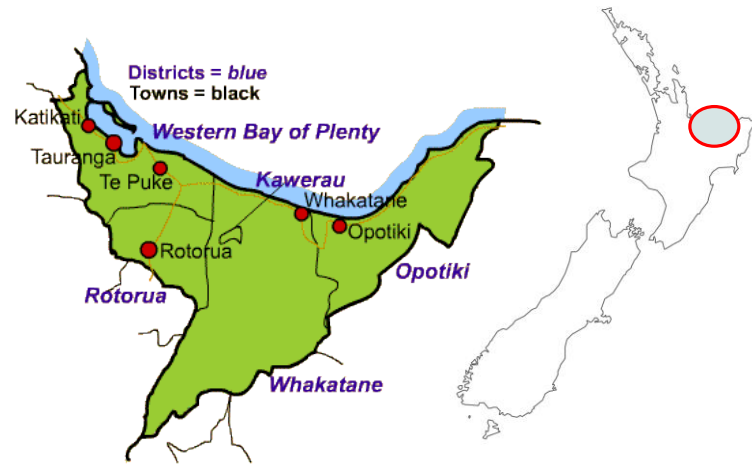
# TRIBAL DATA SOVEREIGNTY: WHAKATOHEA RIGHTS AND INTERESTS



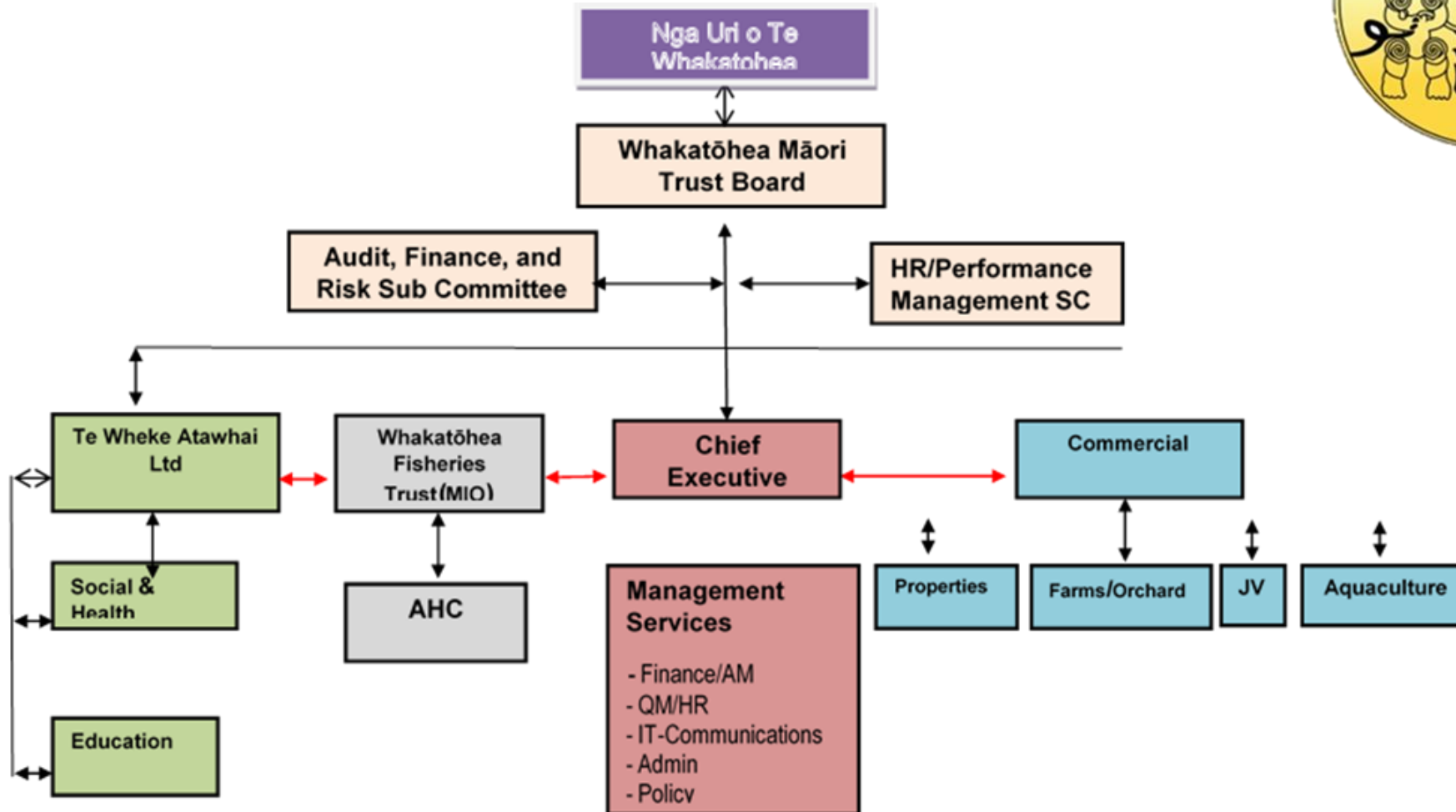
Data Sovereignty for Indigenous Peoples:  
Current Practice and Future Needs  
Australian National University  
Canberra, 9/10 July 2015

Maui Hudson, Dickie Farrar,  
Louisa Erickson, Danny  
Paruru, Faith Gebert, Priscilla  
Drummond, Lesley McLean

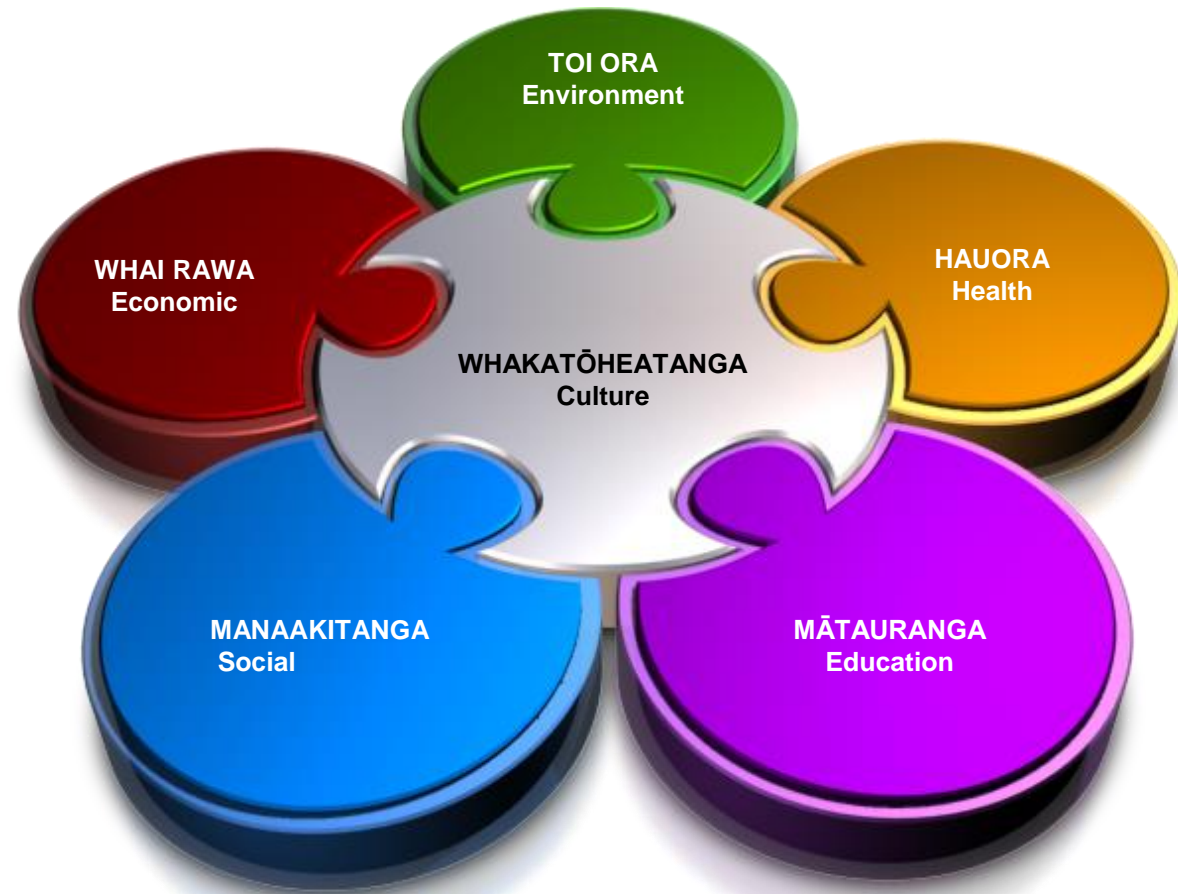
# WHAKATOHEA



# WHAKATOHEA MAORI TRUST BOARD



# VISION 2060



Its all about **WHANAU**





# WHAKATOHEA INTEREST IN DATA

The vast array of activities that the tribal organization is responsible for illustrates the importance of high quality information to support their decision-making.

Tribal information needs cross a broad range of domains...the tribe is collecting and becomes the steward for a range of administrative data sets, health and social service records, commercial information, historic accounts, indigenous knowledge, strategy documents and research.

The tribe have recognized that robust planning will create a strong foundation to take advantage of investment opportunities and this is based in part providing quality information to governors to create a more transparent decision-making processes.

Each year the data and information needs of the tribe increase as we strive to improve our businesses, services and to uplift our nation.

# WHAT IS DRIVING TRIBAL INTEREST IN DATA

## Growing Role of Iwi

- Treaty settlements
- Co-governance arrangements

## Growing Economic Influence

- Resources
- Advocacy

## Growing Intellectual Capital

- Increasing tertiary participation
- Infrastructure and policy

## Growing Opportunities for Indigenous Knowledge

The screenshot shows a web browser displaying a news article on the website tangatawhenua.com. The article title is "How can data and statistics help your whanau, hapu, iwi? #MaoriBigData". The article is categorized as an "Editor's Pick" and is dated March 23, 2015. The article content includes an advertisement for the Ministry of Education titled "What will Communities of Schools mean for your child?" and a large infographic titled "New Zealand as a village of 100 people" based on the 2013 Census. The infographic shows that New Zealand's population of 4,242,048 is equivalent to a village of 100 people, where 49 are male and 51 are female. It also features a rainbow chart showing population growth from 1981 to 2013.

Staff start page: Universit... x Hawaii - maui@waikato... x How can data and statisti... x how to screenshot on win... x

news.tangatawhenua.com/2015/03/maori-big-data/

ABOUT TW.COM | MARKET 2 MAORI | COMMS STRATEGIES | MAORI ORGS | CODING 4 KIDS | CONTACT

maori news & indigenous views  
tangatawhenua.com

Whanau, Hapu, Iwi, Marae | Business | Health | Tech | Education | Arts & Culture | Politics | Korero

Home > Editor's Pick > How can data and statistics help your whanau, hapu, iwi? #MaoriBigData

## How can data and statistics help your whanau, hapu, iwi? #MaoriBigData

Editor's Pick | Resources | Whanau, Hapu, Iwi, Marae | Mar 23, 2015

**What will Communities of Schools mean for your child?**  
FIND OUT MORE  
MINISTRY OF EDUCATION  
TE Kaitiaki o te Mātauranga  
New Zealand Government  
Advertisement

**New Zealand as a village of 100 people**  
2013 CENSUS

**Our population**  
In our village...

**4,242,048**  
is our usually resident population in 2013.  
In our village of 100, each person represents 42,420 people.

**49** are male  
**51** are female  
74 people

2013 1981

Have a patai? Contact us!

10:22 a.m.  
6/07/2015

# AOTEAROA NEW ZEALAND'S DATA FUTURE

Iwi access to good quality data

Variable quality of ethnicity data

Absence of tribal affiliation

Integrated Data Infrastructure

NZ Data forum

- Value
- Inclusion
- Trust
- Control

“The same can be said that statistics are a taonga as well”



# INFORMING TRIBAL DATA SOVEREIGNTY

## Indigenous Cultural and Intellectual Property Rights

- Mataatua Declaration on Cultural and Intellectual Property Rights of Indigenous People 1993
- UN Declaration on Rights of Indigenous Peoples 2007

## Indigenous Research Ethics

- OCAP
- Te Ara Tika: Guidelines on Maori Research Ethics

## Resource Rights & Interests

- Fisheries Settlements
- Treelords Settlement
- Radio Spectrum
- WAI262 Flora, Fauna, cultural and Intellectual property claim
- Freshwater rights and interests



# TRIBAL RIGHTS & INTEREST TO DATA

## Exclusive Rights – Culturally and Commercially Sensitive

- Indigenous knowledge
- Client Relationship Management data
- Commercial Intellectual Property
- Genetic data - tribal members and indigenous flora

## Shared Rights – Enabling Beneficial Outcomes for Tribes

- Central Government Administrative data
- Service level information created by tribal entities

## Shared Interests – Opportunities for Advancement

- Research outputs
- Government/agency reports
- Commercial activities



# TE WHAKATOHEA HEREKORE: TE WHAKATOHEA KNOWS NO BOUNDS



## DATA WILL FUEL WHAKATOHEA'S FUTURE